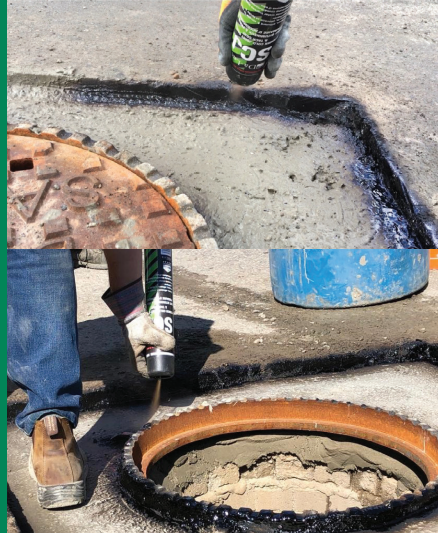


SCJ Tack Coat & Joint Sealer

APPLICATIONS

SCJ is a bitumen tack coat & joint sealer, that is applied onto vertical edges and the surface base before the application of asphalt. It will increase the bond of the material to the substrate and waterproof the area. This will significantly enhance the reinstatement's performance by preventing the ingress of water and freeze/thaw effect.



TECHNICAL

SCJ is supplied in 750ml cans with the bitumen being discharged by inverting the container and pressing the spray button. Coverage is approximately 150 linear meters per can.

PREPARATION

Remove as much standing water and loose particles as possible prior to product application. The sealer can be applied to damp or dry surfaces.

APPLICATION

Hold the can tightly and shake vigorously before use. Invert the can and press the spray button. Cover the area to be sealed with long strokes from a distance of 175mm to 250mm working from the top downwards. Ensure that the entire surface is covered.

CLEANING

Point nozzle upward immediately after use and spray for a few seconds to clear it, taking care not to spray into wind. Failure to clean the nozzle after use could result in the aerosol becoming blocked rendering the product unusable.

STORAGE

Aerosol cans must NOT be exposed to direct sunlight or temperatures above 50°C / 122°F. Store in a cool well-ventilated place.

SHELF LIFE

Shelf life in correct conditions for sealed goods is 12 months.

HEALTH, SAFETY & ENVIRONMENTAL

Please ensure that appropriate PPE is used when preparing, mixing and applying products. Always wash your hands before consuming food and make sure that materials are kept safely out of reach of children and animals. Please dispose of packaging and waste responsibly and in accordance with local authority requirements. A full material datasheet relating to this product is available from Da-Lee.

QUALITY ASSURANCE

Our products are guaranteed against defective materials and manufacture, and will be replaced or money refunded if the goods do not comply with our promotional literature. We cannot however accept any liability arising from the application or use of our products because we have no direct or continuous control over where and how our products are used. All products are sold to our conditions of sale, copies of which can be obtained on request.

TECHNICAL DATA

Colour	Black
Unit/Packaging	750ml can, 12 cans per box